

Styles 204 and 204HP

Styles 204 and 204HP spool-type expansion joints can be constructed as single- or multiple-arch types. They connect pipe flanges in concentric or eccentric tapers, to join piping of unequal diameters.

Benefits

- Fully lab- and field-tested for long life and exceptional reliability
- Seamless flange face eliminates need for gaskets
- High pressure- and vacuum-resistance increases safety and ensures suitability for wide range of applications
- Can be custom-designed for greater movement capability and easier installation
- Variety of elastomer and fabric combinations meet the demands of temperature, pressure and media

Design

- **Tube**
 - Chlorobutyl resists cracking due to high temperatures, weathering, oxidation and chemicals
 - Abrupt arch configuration provides maximum movement, and pressure and vacuum resistance
 - Seamless tube creates a positive flange seal without gaskets

	Pipe I.D.		Pressure Rating @ 3:1 Safety Factor		Pressure Rating @ 4:1 Safety Factor		Vacuum	
	Inch	mm	psi	bar	psi	bar	in. Hg	mm Hg
Style 204†	1/2-4	13-100	165	11	125	8.5	29.9	750
	5-12	125-300	140	10	105	7	29.9	750
	14	350	85	6	65	4.5	29.9	750
	16-24	400-600	65	4.5	50	3.5	29.9	750
	26-66	650-1,650	55	3.8	40	2.8	29.9	750
	68-96	1,700-2,400	45	3	35	2.5	29.9	750
	98-108	2,450-2,700	40	2.8	30	2	29.9	750
	110-144	2,750-3,600	30	2	25	1.7	29.9	750
Style 204HP†	1/2-4	13-100	200	14	150	10.4	29.9	750
	5-12	125-300	190	13	145	10	29.9	750
	14	350	130	9	100	7	29.9	750
	16-20	400-500	110	8	85	5.5	29.9	750
	22-24	550-600	100	7	75	5	29.9	750
	26-40	650-1,000	90	6	65	4.5	29.9	750
	42-66	1,050-1,650	80	5.5	60	4	29.9	750
	68-96	1,700-2,400	70	5	50	3.5	29.9	750
	98-108	2,450-2,700	60	4	45	3	29.9	750
	110-144	2,750-3,600	50	3.5	35	2.5	29.9	750

† Higher pressure designs are available. Call Garlock with application details and to inquire about larger sizes.



- **Body**
 - Chlorobutyl/polyester construction with welded, treated metal body rings for dimensional stability
- **Cover**
 - Chlorobutyl extends to outside flange diameter
 - Durable coating resists weathering and oxidation

Special Liner and Cover Materials

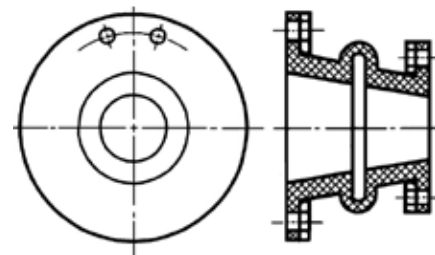
- Hypalon**
- Nitrile
- Natural (tube only)
- EPDM
- Neoprene
- FDA materials available

** Kevlar is a registered trademark of DuPont; Hypalon is a registered trademark of DuPont Dow Elastomers.

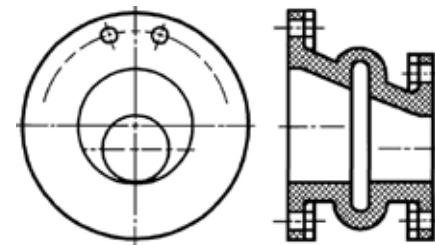
Temperature

	Max. Temp.
Standard chlorobutyl/polyester	+250°F (+120°C)
Chlorobutyl/fiberglass/Kevlar**	
with EPDM tube and cover	+300°F (+150°C)
Fluoroelastomer w/ fiberglass/Kevlar	+400°F (+205°C)

Optional Configurations



Concentric Tapered



Eccentric Tapered