

GARFLEX® 8100

GARFLEX® expansion joints feature rugged yet flexible nylon cord reinforcement in a molded, spherical bellows design that ensures an exceptional burst pressure rating. The streamlined flowing arch design reduces turbulence and allows smooth, quiet flow—no need to fill the arch and restrict its movement.

Benefits

- Flowing arch design prevents sediment buildup and reduces turbulence
- Floating flanges can be rotated to accommodate torsional misalignment
- Molded spherical bellows accommodate up to one inch of axial movement and transverse deflection
- Nylon-reinforced nitrile tube earns high pressure rating without sacrificing flexibility; resists most hydrocarbons, oils and gasoline
- Supplied silicone-free

Design

- **Tube**
 - Nitrile bellows with rugged nylon tire cord reinforcement ensure strength yet flexibility
 - Incorporates a flowing arch design to eliminate product buildup
- **Cover**
 - Homogeneous layer of neoprene coated with a protectant withstands weathering and ozone
- **Flanges**
 - Iron flanges are corrosion-resistant

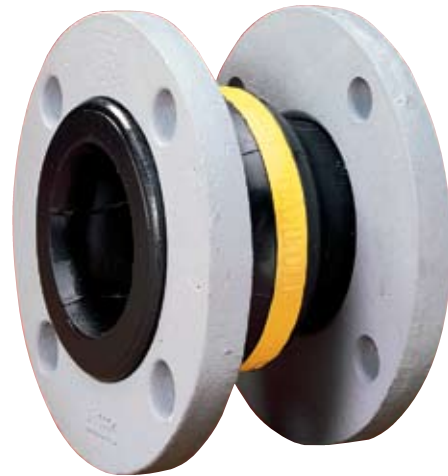
Note:

Style 8100 expansion joints are supplied with rotating flanges drilled to ANSI Class 150# specifications. Can be installed against raised face pipe flanges.

Bellow Sizes

	Nominal F-F (in.)	Nominal Bellow I.D. (inch)									
		2	2.5	3	4	5	6	8	10	12	
Series 50	5	■	■	■	■	■	■	■	■	■	■
Series 60	6	■	■	■	■	■	■	■	NA	NA	
Series 80	8	NA	NA	NA	NA	NA	NA	NA	■	■	

NA = Not available



Temperature / Pressure Nylon-Reinforced Nitrile

Operating Temperature		Pressure	
°F	°C	psi	bar
To 120°F	To 50°C	232	16
120°F to 160°F	50°C to 70°C	174	12
160°F to 195°F	70°C to 90°C	139	9.5
195°F to 210°F	90°C to 100°C	70	5
210°F to 230°F	100°C to 110°C	25	1.7

Vacuum Rating* — Nitrile

Pipe I.D.		Vacuum	
Inch	mm	in. Hg	mm Hg
2 to 2-1/2	50 to 63	23	575
3	75	20	500
4	100	17	425
5 to 6	125 to 150	11	275
8	200	8	200
10 to 12	250 to 300	5	125

* At nominal FF dimensions only.

Movement — Nylon-Reinforced Nitrile

Type Movement	Movement	
	Inch	mm
Compression	1	25
Elongation	1	25
Transverse Deflection (at recommended installed position)	± 1	± 25

Movements are non-concurrent.

Type Movement	Pipe I.D.		Max. Allowed
	Inch	mm	
Angular Deflection (at recommended installed position)	2	50	35°
	2-1/2 to 3	63 to 75	30°
	4	100	25°
	5 to 6	125 to 150	20°
	8	200	15°
	10 to 12	250 to 300	10°